

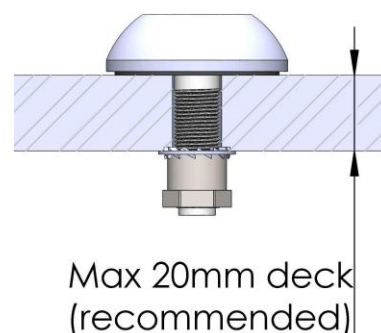
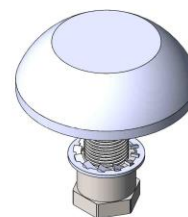


## GPS

### GPS Marine Antenna

GPS is a marine antenna for the frequency 1575.42 MHz band. The GPS antenna can be installed directly on the deck, it withstands walking pressure, or on a rail mount or any of the 1"-14 thread standard marine mounts with adaptor N225F. The GPS is manufactured in premium quality materials in order to prevent galvanic corrosion.

GPS is sold worldwide during almost a decade. The antenna is subject for improvement at all times. The antenna has the same rugged design as all other AC Marine antennas thus it withstands harsh environmental conditions.



#### Electrical specifications:

Frequency range (MHz)	1575.42	
Nominal impedance (ohm)	50	
Gain (dB)	26	
Supply voltage (VDC)	3.0-5.5	
Noise figure (dB)	Typ. 1.35	
Antenna gain excl. LNA (dBic)	> 4.4	
VSWR	< 2:1	
Connector	FME(male)	
DC-shortcd	Yes	

#### Mechanical specifications:

Length (mm)	∅48 x 53 (16 above deck)
Weight (kg/lbs)	0.06/0.16
Wind rating (m/s / mph)	45/101
Material	ABS, Brass, Stainless steel
Colour	White
Temperature range (°C/°F)	-40 to +60 / -40 to +140

#### Mounting:

No mount included.

Recommended to be used with N225F mount for adaptation to all 1"-14 TPI standard AC Marine mounting equipment.